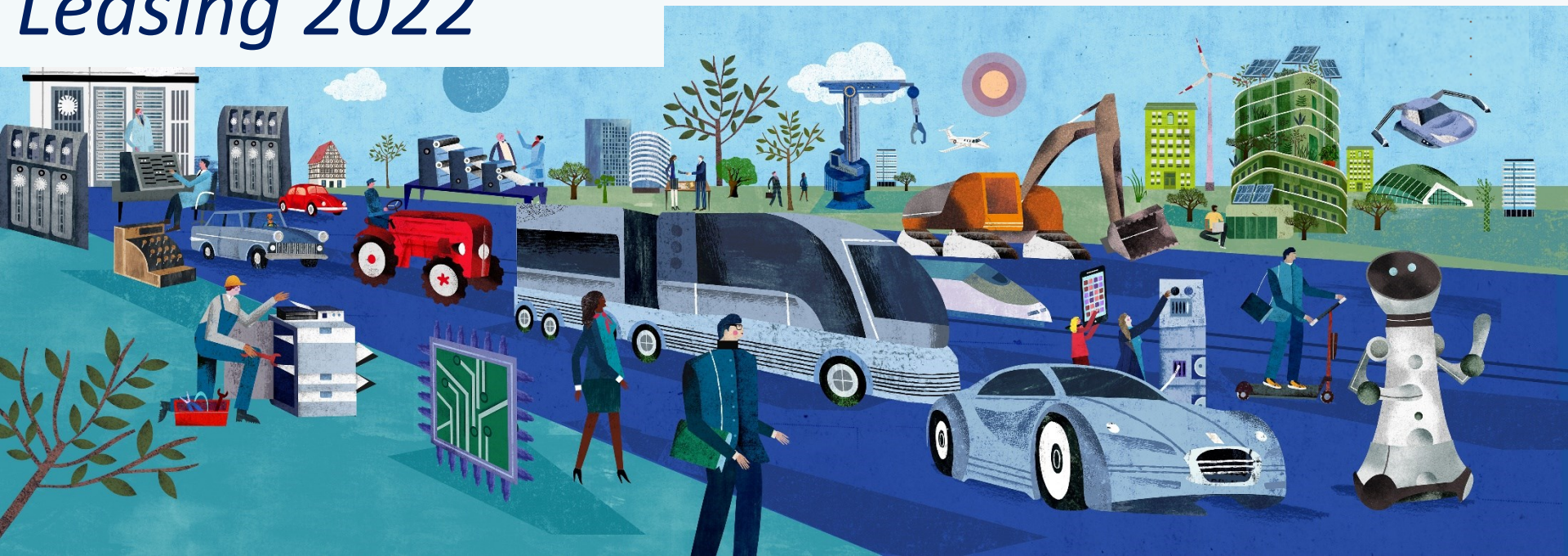


# Leasing 2022



# Leasing 2022

01

Investments of the Leasing Industry

02

Leasing Assets

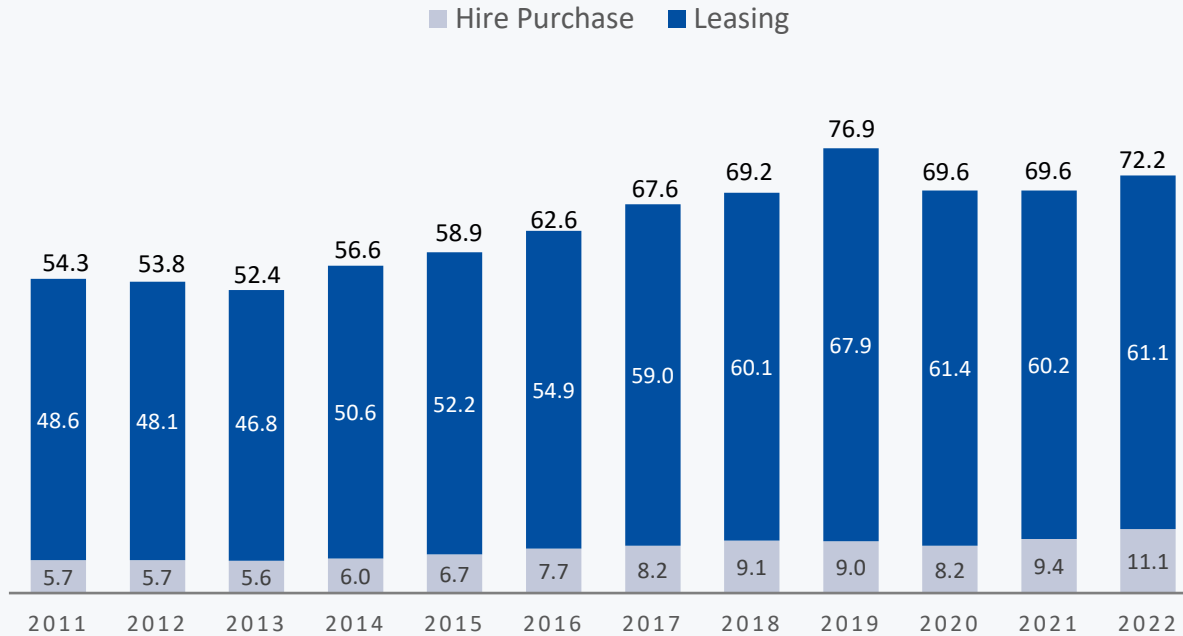
03

Penetration Rates

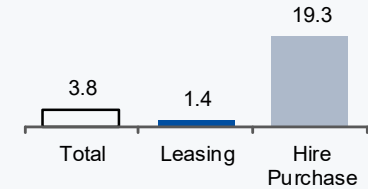


## 2022: NEW BUSINESS IN THE SECTOR RISES TO 72 BILLION EUROS

### FINANCING VOLUME OF LEASING AND HIRE-PURCHASE IN BILLIONS OF EUROS



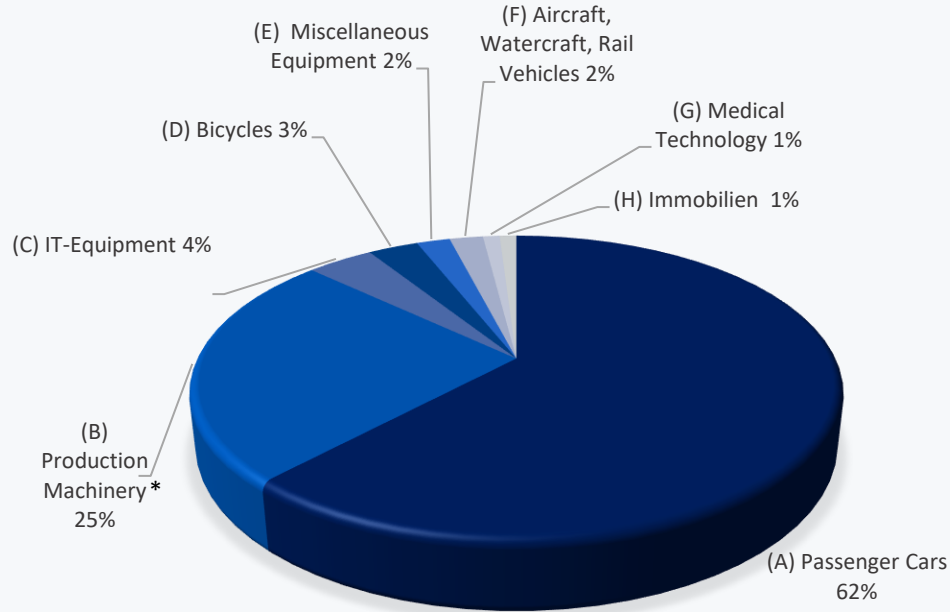
### Rate of Change 2022 to 2021 (%)



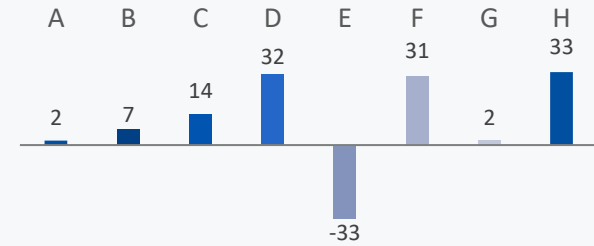


## PASSENGER CARS DOMINATE NEW BUSINESS IN THE LEASING INDUSTRY

### SHARES OF THE OBJECT GROUPS IN NEW BUSINESS IN %



### Rates of Change 2022 to 2021 by Acquisition Value (%)



Source: German Economic Institute. BDL | 2022: Projection of the development in the BDL partial survey for the entire leasing market. New business leasing and installment plan

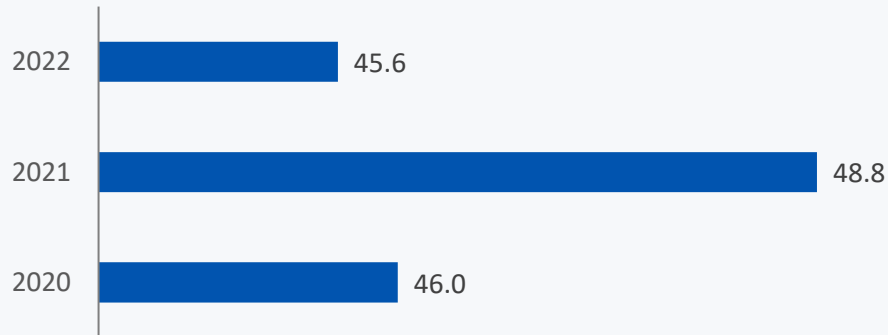
\* Due to an adjustment in the data collection, in 2022 the object group machinery for production. Commercial vehicles as well as construction machinery and agricultural equipment are considered together.



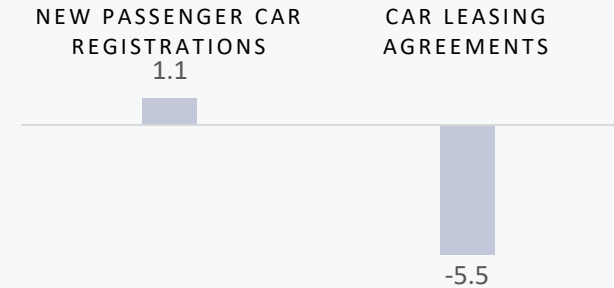
## LEASING IN THE PASSENGER CAR MARKET:

### SPECIAL EFFECTS ENSURED RECORD SHARE IN 2021 / LEASING CONTRACTS RENEWED IN 2022

#### SHARE OF LEASED VEHICLES IN NEW PASSENGER CAR REGISTRATIONS IN PERCENT



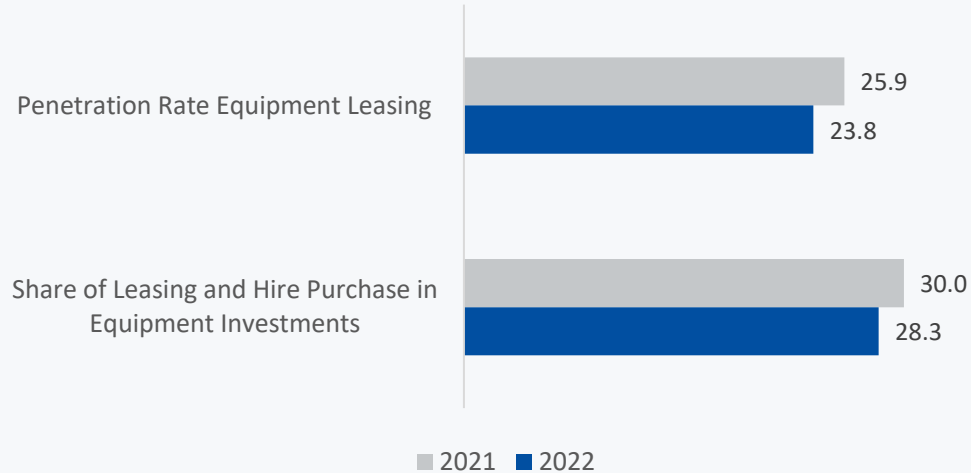
#### Rates of Change 2022 to 2021 by Units (%)





## LEASING SECTOR FINANCES SIGNIFICANT SHARE OF OVERALL EQUIPMENT INVESTMENT IN GERMANY

SHARES IN %



Bundesverband  
Deutscher Leasing-  
Unternehmen e. V. (BDL)

Linkstraße 2  
10785 Berlin  
+49 30 20 63 370  
[www.leasingverband.de](http://www.leasingverband.de)